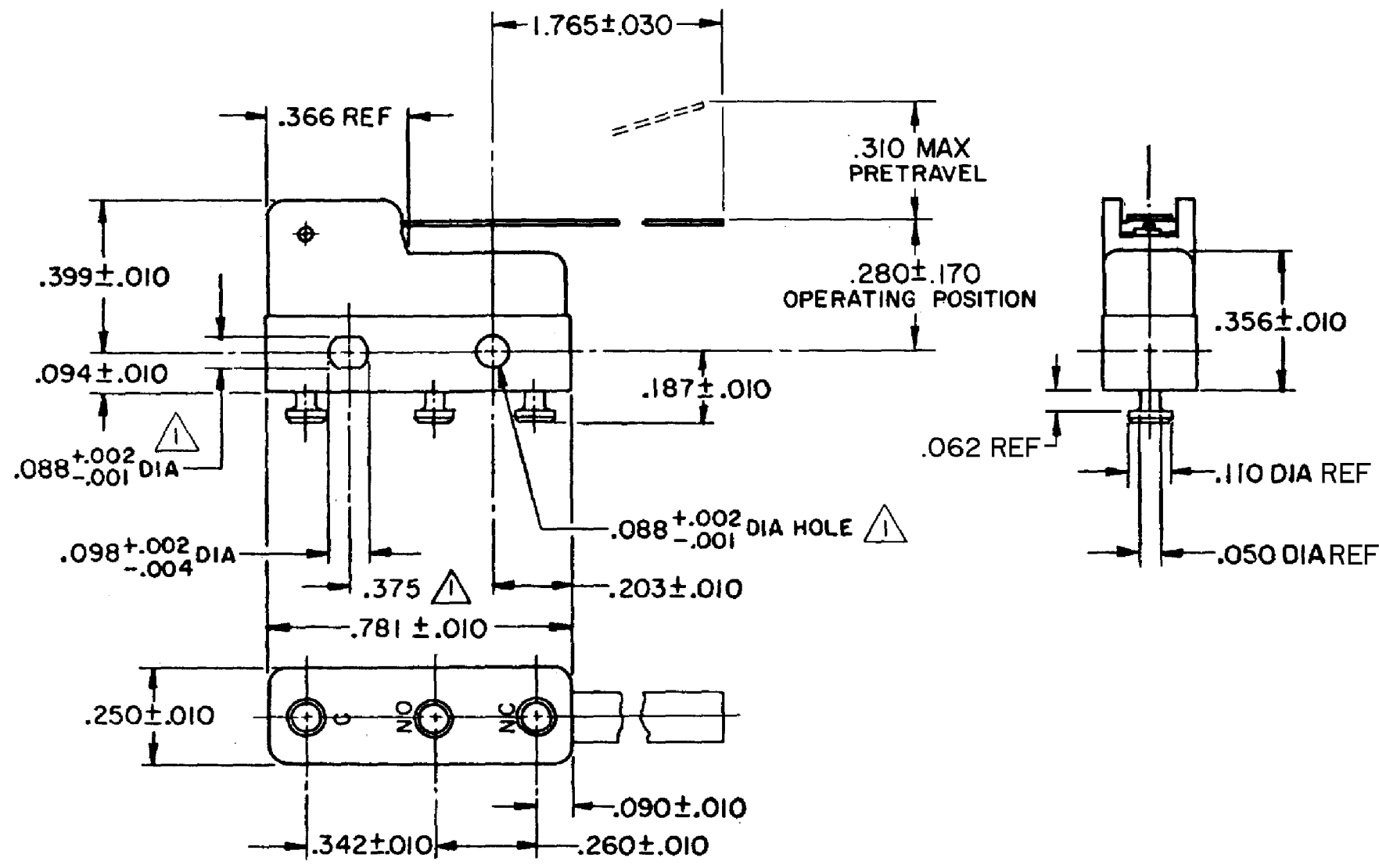
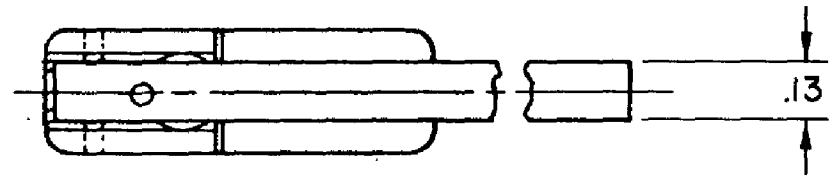


HONEYWELL
PART NUMBER
311SM3-T
PRODUCT CODE
TZA1200

REV	DOCUMENT	CHANGED BY	CHECK
6	0038113	PRS 12JUN08	BLR



NOTE -
 ▲ MOUNTING HOLES WILL ACCEPT PINS OR SCREWS OF .087 MAX DIA ON .375 ± .002 CENTERS
 2- SWITCH WILL WITHSTAND TEMPERATURE OF 250°F
 3- .TERMINALS ARE PLATED FOR SOLDERING

RELEASE NO.	SR - 11750
REPLACES	-

CHARACTERISTICS	
OPERATING FORCE	15 GRAM MAX
RELEASE FORCE	2 GRAM MIN
DIFFERENTIAL TRAVEL	.110 MAX
OVERTRAVEL	.057 MIN

ELECTRICAL DATA		
CONTACT ARRANGEMENT SPDT		
30 VOLTS DC RATING		
	SEA LEVEL	50,000 FT
INDUCTIVE	3 AMP	2.5 AMP
RESISTIVE	5 AMP	5 AMP
MAXIMUM INRUSH 24 AMP		
APPROVALS	KEMA, CE	5A, 250V ~ T85 1E4
	UL, CSA	5A, 250 VAC ~

DESIGN UNITS:	INCH
TOLERANCES UNLESS NOTED:	
NO PLACE	X ±
ONE PLACE	.X ±
TWO PLACE	.XX ±
THREE PLACE	.XXX ±
FOUR PLACE	.XXXX ±
ANGLES	±
THIRD ANGLE PROJECTION	

DRAWN	VK	05 NOV 07
CHECK	RJ	05 NOV 07
THIS DRAWING COVERS A PROPRIETARY ITEM AND IS THE PROPERTY OF HONEYWELL. THIS DRAWING IS NOT TO BE COPIED OR USED WITHOUT THE PERMISSION OF HONEYWELL.		
INTERPRET PER ANSI Y14.5M-1982 OTHER HONEYWELL ENGINEERING STANDARDS MAY APPLY		
RASTER		

Honeywell			
TITLE SWITCH - BASIC			
SIZE	TYPE	DRAWING NAME	REV
B	I	311SM3-T	6
SCALE	-	WEIGHT .006 LB MAX	SHEET 1 OF 1